

Product Catalogue 2013





Tanda Technology (Hong Kong) Limited

is a member of Tanda Group of Shenzhen, China. Tanda Group specializes in the design, manufacturing and sales of the Intelligent Fire Alarm System (IFAS), Intelligent Parking Management System (IPMS), LED Lighting and Intelligent Emergency Evacuation System (IEES), which have been certified by CCC, HKFSD, CE and RoHS respectively and successfully sold to both China domestic market and international market covering over twenty countries and regions.



Tanda Technology (Hong Kong) Limited is one of the core companies in the group to exclusively focus on the group's export business in HK and Macao as well as other foreign countries, which provides foreign customers with quality T&A products and also offers them timely after-sales services.



IFAS and IPMS are featured with their intelligent characters and Chinese displays, which makes it simpler and easier for users to conduct local installation, commissioning, monitoring, operation and services. LED Lighting and IEES are very well developed new business of the group in recent years. Focused on energy-saving and environmental protection, on the basis of several-year application of the ordinary LED lighting products, Tanda has successfully developed its unique programmable smart LED lights with much more energy-saving and intelligent controls.



Sticking to its commitment to create a green society which is of energy-saving, low carbon and eco-friendly, Tanda will keep trying its utmost to serve the society better with both quality products and superb services.

TABLE OF CONTENTS

LED LIGHTING	PAGE
1. Intelligent Light	2
1.1 Intelligent Corridor Light	3
1.2 Intelligent Down Light	4-5
2. Tube Light	6
2.1 T5 Series	7
2.2 T8 Series	8
2.3 T10 Series	9
2.4 Sensor Tube Series	10
2.5 Special Function Tubes	11
3. Panel Light	12
3.1 Square Panels	13-14
3.2 Rectangular Panels	15-18
3.3 Round Panels	19
4. Down Light	20
4.1 Down Light	21
5. Bulb Light	22
5.1 Bulb Light	23
6. Spotlight	24
6.1 Spotlight	25
7. Flood Light	26
7.1 Flood Light with Internal Driver	27-28
7.2 Flood Light with External Driver	29
FIRE ALARM SYSTEM	
8. Intelligent Fire Alarm System	30
8.1 Control Panel	31
8.2 Detector & Module	32-34
8.3 Audible & Visual Alarms	35
8.4 Power Supply Unit	36



INTELLIGENT LIGHT

Main Features

- Programmable intelligent LED Corridor Light and Down Light
- Light brightness can be automatically dimmed to 10~50% in the standby mode and up to 100% once a moving person is detected by the built-in sensor.
- Number of the lights in a preset zone can be adjustable by users with the remote programmer.
- Light brightness level and lighting time can be adjusted by users with the remote programmer.
- Inter-communication: All the lights in a predefined zone can be automatically lit up one by one in the direction of a moving person when detected by the built-in sensor.
- Environment friendly, no UV or infrared radiation, mercury free.
- Unique design of light fixture with special structure for better heat dissipation.
- Significant energy saving and extra long lifespan.
- Easy installation, replace the traditional light without any changes of wiring layout.
- Suitable for applications in parking garage, shopping mall, hotel, school, hospital, corridors and restaurant, etc..

1.1 Intelligent Corridor Light



Model No.	TA-DT-18	TA-DT-24	TA-DT-36
Dimension	1200x99x46mm	600x148x98mm	1200x148x98mm
Power	18W	24W	36W
Standby Power	2.5W(Adjustable)	3.6W(Adjustable)	3.6W(Adjustable)
Input Voltage	220VAC 50/60Hz		
Full Power Time	60 sec (adjustable)		
Light Source	SMD3014 (168pcs)	SMD5630 (48pcs)	SMD5630 (80pcs)
Color Temperature	WW:2700-3700K PW:4000-5300K CW:5500-6700K		
Luminous Flux	1200-1650 lm	1400-1800 lm	2500-3000 lm
CRI (Ra)	≥80		
Intercom Distance	≤8m (Less than 5m recommended)		
Detection Distance	≤5m		
Working Environment	-20°C~50°C (RH≤90%)		
LED Lifespan	≥35,000 hrs		

Certificate



Intelligent Light

1.2 Intelligent Down Light



Model No.	TA-DL-12	TA-DL-15
Dimension	Φ173×H60mm (7")	Φ200×H60mm (8")
Power	12W	15W
Standby Power	1.8W(Adjustable)	2.2W(Adjustable)
Input Voltage	220VAC 50/60Hz	
Full Power Time	60 sec (adjustable)	
Light Source	SMD5630 (24pcs)	SMD5630 (30pcs)
Color Temperature	WW:2700-3700K PW:4000-5300K CW:5500-6700K	
Luminous Flux	800-1040 lm	1000-1300 lm
CRI (Ra)	≥80	
Intercom Distance	≤8m (Less than 5m recommended)	
Detection Distance	≤5m	
Working Environment	-20°C~50°C (RH≤90%)	
LED Lifespan	≥50,000 hrs	

Certificate



Demo of Intelligent Light



Light brightness keep 10~50% brightness in the standby mode.



Light up to 100% brightness when a moving person is detected.



Intercommunication - The lights set in a group can be lit up automatically one by one





TUBE LIGHT

Main Features

- Energy saving up to 60% in electricity consumption compared with traditional fluorescent tube light.
- Environment friendly, no UV or infrared radiation, mercury free.
- Instant on without delay, even light distribution, no color degradation, flicker-free.
- T5, T8 and T10 LED tubes selectable.
- Three types of PC cover available – Frosted, Striped and Clear covers.
- Special function tubes for particular application in supermarket
- Optional T8 Tubes with Radar or IR sensors.
- Easy installation, ideal for direct replacement of traditional T5/T8/T10 fluorescent tubes.
- Maintenance free, extra long lifespan of over 50,000 hours
- Suitable for applications in office, supermarket, hotel, school, hospital, garage and warehouse.

Tube Light

2.1 T5 Series



Model No.	TA-TL0600-09T5	TA-TL1200-18T5	TA-TL1500-22T5
Tube Size	Φ15×600mm (2ft)	Φ15×1200mm (4ft)	Φ15×1500mm (5ft)
Power	9W	18W	22W
Input Voltage	220VAC 50/60Hz		
Light Source	SMD3528 (144pcs)	SMD3528 (288pcs)	SMD3528 (324pcs)
Color Temperature	WW:2700-3700K PW:4000-5300K CW:5500-6700K		
Luminous Flux	720-810 lm	1440-1620 lm	1760-1980 lm
CRI (Ra)	≥70		
Working Environment	-20°C~50°C (RH≤90%)		
LED Lifespan	≥50,000 hrs		

Certificate



Tube Light

2.2 T8 Series



Model No.	TA-TL0600-09T8	TA-TL0900-14T8	TA-TL1200-18T8	TA-TL1500-24T8
Tube Size	Φ26×600mm (2ft)	Φ26×900mm (3ft)	Φ26×1200mm (4ft)	Φ26×1500mm (5ft)
Power	9W	14W	18W	24W
Input Voltage	220VAC 50/60Hz			
Light Source	SMD3528 (144pcs)	SMD3528 (210pcs)	SMD3528 (288pcs)	SMD3528 (360pcs)
Color Temperature	WW:2700-3700K PW:4000-5300K CW:5500-6700K			
Luminous Flux	720-810 lm	1120-1260 lm	1440-1620 lm	1920-2136 lm
CRI (Ra)	≥70			
Working Environment	-20°C~50°C (RH≤90%)			
LED Lifespan	≥50,000 hrs			

Certificate



Tube Light

2.3 T10 Series



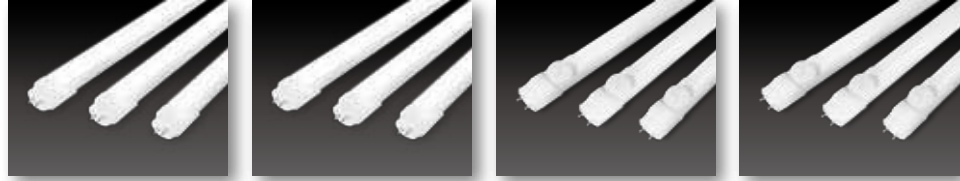
Model No.	TA-TL0600-09T10	TA-TL0900-14T10	TA-TL1200-18T10
Tube Size	Φ30×600mm (2ft)	Φ30×900mm (3ft)	Φ30×1200mm (4ft)
Power	9W	14W	18W
Input Voltage	220VAC 50/60Hz		
Light Source	SMD3528 (144pcs)	SMD3528 (210pcs)	SMD3528 (288pcs)
Color Temperature	WW:2700-3700K PW:4000-5300K CW:5500-6700K		
Luminous Flux	720-810 lm	1120-1260 lm	1440-1620 lm
CRI (Ra)	≥70		
Working Environment	-20°C~50°C (RH≤90%)		
LED Lifespan	≥50,000 hrs		

Certificate



Tube Light

2.4 Sensor Tube Series



Model No.	TA-TL0600-09T8R	TA-TL1200-18T8R	TA-TL0600-09T8IR	TA-TL1200-18T8IR
Tube Size	Φ26×600mm (2ft)	Φ26×1200mm (4ft)	Φ26×600mm (2ft)	Φ26×1200mm (4ft)
Power	9W	18W	9W	18W
Input Voltage	220VAC 50/60Hz			
Light Source	SMD3528 (144pcs)	SMD3528 (288pcs)	SMD3528 (144pcs)	SMD3528 (288pcs)
Color Temperature	WW:2700-3700K PW:4000-5300K CW:5500-6700K			
Luminous Flux	720-810 lm	1440-1620 lm	720-810 lm	1440-1620 lm
CRI (Ra)	≥70			
Detection Distance	≤10m		≤5m	
Detection Angle	≤120°		≤120°	
Working Environment	-20°C~50°C (RH≤90%)			
LED Lifespan	≥50,000 hrs			

Certificate



2.5 Special Function Tubes



Name	Emergency Tube Light	Waterproof Tube Light	Colorful Tube Light
Model No.	TA-TL1200-18T8EM	TA-TL1200-18T8WP	TA-TL1200-15T8COL
Tube Size	Φ26×1200mm (4ft)	Φ26×1200mm (4ft)	Φ26×1200mm (4ft)
Power	18W	18W	15W
Input Voltage	220VAC 50/60Hz		
Light Source	SMD3528 (288pcs)	SMD3528 (288pcs)	SMD3528 (252pcs)
Color Temperature	WW:2700-3700K PW:4000-5300K CW:5500-6700K		
Luminous Flux	1440-1620 lm	1440-1620 lm	1200-1350 lm
CRI (Ra)	≥70		
IP Rating	N/A	IP65	N/A
Battery Hours	2hrs	N/A	N/A
Color Range	WW/PW/CW	WW/PW/CW	Green/Red/Blue
Working Environment	-20°C~50°C (RH≤90%)		
LED Lifespan	≥50,000 hrs		

Certificate



PANEL LIGHT



Main Features

- Ultra-thin design with uniformly edge-light emitting.
- Super bright light source: LumenMax SMD LED chips.
- Extra insulation design capable of withstanding high voltage up to 3750V.
- High power efficiency with UL listed LED driver.
- Instant-start luminaries without delay. Shock and vibration resistant
- Eco-friendly, no flicker, no UV or infrared radiation, mercury free, no RF interference.
- Easy installation and ideal replacement for traditional panel light, florescent light and grid light.
- Excellent energy saving: 55%-70% electricity cost less than that of traditional panel light
- Optional single color, RGB and dimmable panel lights available
- Professional thermal management ensures long life-span of over 50,000 hours.
- Suitable for applications in commercial lighting, decorative lighting and office lighting.

3.1 Square Panels



Model No.	TA-PL0303-18W	TA-PL0303-24W	TA-PL0303-30W
Dimension	300x300x11mm (1ft x 1ft)		
Power	18W	24W	30W
Input Voltage	220VAC 50/60Hz		
Light Source	SMD3014 (160pcs)	SMD3014 (220pcs)	SMD3014 (300pcs)
Color Temperature	WW:2700-3700K PW:4000-5300K CW:5500-6700K		
Luminous Flux	1100-1450lm	1600-1900lm	2100-2500lm
CRI (Ra)	≥75		
Working Environment	-20°C~50°C (RH≤90%)		
LED Lifespan	50,000 hrs		
Options	Single color, RGB and dimmable panels		

Certificate



Panel Light

3.1 Square Panels

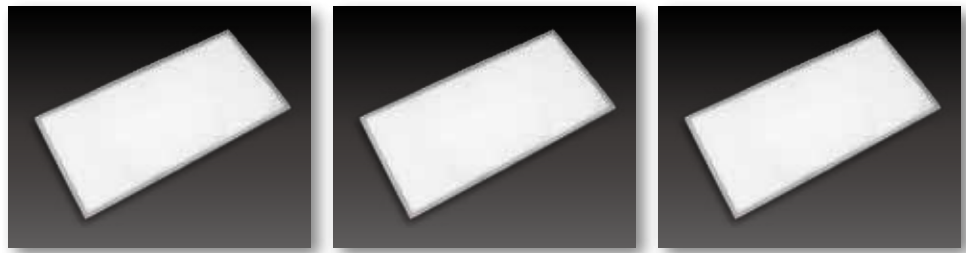


Model No.	TA-PL0606-36W	TA-PL0606-48W	TA-PL0606-60W
Dimension	600x600x11mm (2ft x 2ft)		
Power	36W	48W	60W
Input Voltage	220VAC 50/60Hz		
Light Source	SMD3014 (352pcs)	SMD3014 (480pcs)	SMD3014 (600pcs)
Color Temperature	WW:2700-3700K PW:4000-5300K CW:5500-6700K		
Luminous Flux	2600-3000lm	3400-3800lm	4000-4600lm
CRI (Ra)	≥75		
Working Environment	-20°C~50°C (RH≤90%)		
LED Lifespan	50,000 hrs		
Options	Single color, RGB and dimmable panels available		

Certificate



3.2 Rectangular Panels



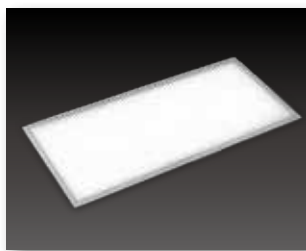
Model No.	TA-PL0603-18W	TA-PL0603-27W	TA-PL0603-36W
Dimension	600x300x11mm (2ft x 1ft)		
Power	18W	27W	36W
Input Voltage	220VAC 50/60Hz		
Light Source	SMD3014 (160pcs)	SMD3014 (254pcs)	SMD3014 (362pcs)
Color Temperature	WW:2700-3700K PW:4000-5300K CW:5500-6700K		
Luminous Flux	1100-1450lm	1900-2400lm	2600-3000lm
CRI (Ra)	≥75		
Working Environment	-20°C~50°C (RH≤90%)		
LED Lifespan	50,000 hrs		
Options	Single color, RGB and dimmable panels available		

Certificate



Panel Light

3.2 Rectangular Panels



Model No.	TA-PL0903-32W
Dimension	900x300x11mm (3ft x 1ft)
Power	32W
Input Voltage	220VAC 50/60Hz
Light Source	SMD3014 (308pcs)
Color Temperature	WW:2700-3700K PW:4000-5300K CW:5500-6700K
Luminous Flux	2100-2500lm
CRI (Ra)	≥75
Working Environment	-20°C~50°C (RH≤90%)
LED Lifespan	50,000 hrs
Options	Single color, RGB and dimmable panels available

Certificate



3.2 Rectangular Panels



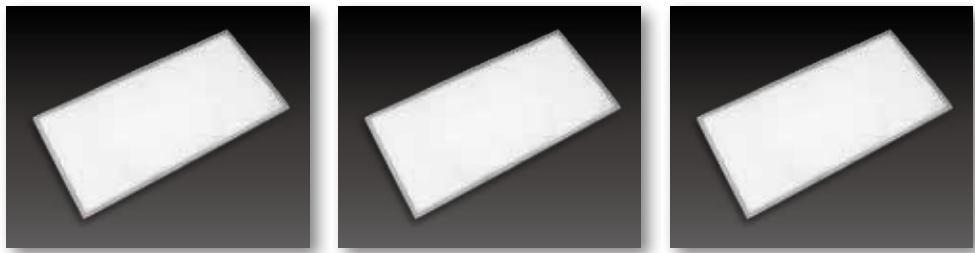
Model No.	TA-PL1203-36W	TA-PL1203-48W	TA-PL1203-54W
Dimension	1200x300x11mm (4ft x 1ft)		
Power	36W	48W	54W
Input Voltage	220VAC 50/60Hz		
Light Source	SMD3014 (352pcs)	SMD3014 (480pcs)	SMD3014 (528pcs)
Color Temperature	WW:2700-3700K PW:4000-5300K CW:5500-6700K		
Luminous Flux	2600-3000lm	3400-3800lm	3700-4200lm
CRI (Ra)	≥75		
Working Environment	-20°C~50°C (RH≤90%)		
LED Lifespan	50,000 hrs		
Options	Single color, RGB and dimmable panels available		

Certificate



Panel Light

3.2 Rectangular Panels

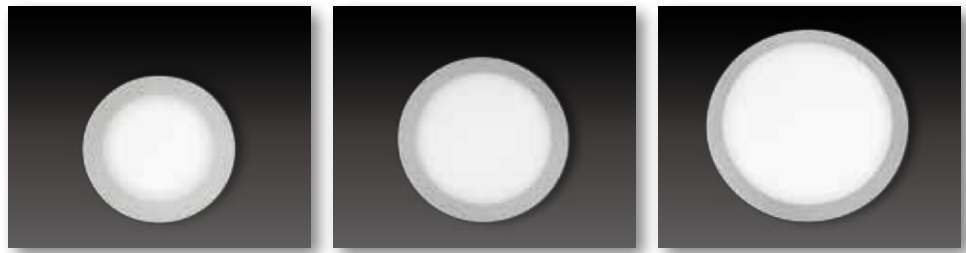


Model No.	TA-PL1260-54W	TA-PL1260-72W	TA-PL1260-95W
Dimension	1200x600x11mm (4ft x 2ft)		
Power	54W	72W	95W
Input Voltage	220VAC 50/60Hz		
Light Source	SMD3014 (528pcs)	SMD3014 (704pcs)	SMD3020 (475pcs)
Color Temperature	WW:2700-3700K PW:4000-5300K CW:5500-6700K		
Luminous Flux	3700-4200lm	5000-5600lm	6800-7600lm
CRI (Ra)	≥75		
Working Environment	-20°C~50°C (RH≤90%)		
LED Lifespan	50,000 hrs		
Options	Single color, RGB and dimmable panels available		

Certificate



3.3 Round Panels



Model No.	TA-PL180R-10W	TA-PL240R-18W	TA-PL300R-24W
Dimension	Ø180x15mm (7")	Ø240x15mm (10")	Ø300x15mm (12")
Power	10W	18W	24W
Input Voltage	220VAC 50/60Hz		
Light Source	SMD3014 (88pcs)	SMD3014 (168pcs)	SMD3014 (220pcs)
Color Temperature	WW:2700-3700K PW:4000-5300K CW:5500-6700K		
Luminous Flux	600-750lm	1100-1450lm	1600-1900lm
CRI (Ra)	≥75		
Working Environment	-20°C~50°C (RH≤90%)		
LED Lifespan	50,000 hrs		
Options	Single color, RGB and dimmable panels available		

Certificate



DOWN LIGHT



Main Features

- Unique pleasant design of light fixture with special structure for better heat dissipation.
- Instant on without delay, even light distribution, no color degradation, flicker-free.
- Environment friendly, no flashing, no UV or infrared radiation, mercury free.
- Easy installation and ideal replacement for traditional down lights
- Maintenance free, energy saving and long life span of over 50,000 hours.
- Suitable for applications in commercial lighting, decorative lighting, home lighting, office lighting, shopping center, hotel, restaurant, etc.

Down Light

4.1 Down Light



Model No.	TA-DL-09	TA-DL-12	TA-DL-15
Dimension	Φ148×H55mm (6")	Φ173×H60mm (7")	Φ200×H60mm (8")
Power	9W	12W	15W
Input Voltage	220VAC 50/60Hz		
Light Source	SMD5630 (18pcs)	SMD5630 (24pcs)	SMD5630 (30pcs)
Color Temperature	WW:2700-3700K PW:4000-5300K CW:5500-6700K		
Luminous Flux	600-780 lm	800-1040 lm	1000-1300 lm
CRI (Ra)	≥80		
Working Environment	-20°C~50°C (RH≤90%)		
LED Lifespan	≥50,000 hrs		
Certificate			



BULB LIGHT



Main Features

- Energy saving up to 85% in electricity consumption compared with traditional incandescent lamp.
- Environment friendly, no UV or infrared radiation, mercury free.
- Instant on without delay, flicker-free.
- Two types of PC cover available – Frosted and Clear covers.
- Optional dimmable function available.
- E14 candle lights for chandeliers and E27 global bulbs available
- Easy installation, ideal for direct replacement of traditional incandescent lamp
- Maintenance free, extra long lifespan of over 50,000 hours
- Suitable for applications in hotel, office, shopping center, restaurant, school, hospital, commercial and home lighting etc.

5.1 Bulb Light



Model No.	TA-BL-05E	TA-BL-08E	TA-BL-02E01	TA-BL-02E02
Dimension	Φ60×H117mm	Φ62×H116mm	Φ45×H84mm	Φ36×H101mm
Power	5W	8W	2W	2W
Input Voltage	220VAC 50/60Hz			
Light Source	SMD5630 (8pcs)	SMD2323 (14pcs)	AC-LED 630 (1pc)	AC-LED 630 (1pc)
Color Temperature	WW:2700-3700K PW:4000-5300K CW:5500-6700K			
Luminous Flux	320-410 lm	530-690 lm	105-140 lm	105-140 lm
CRI (Ra)	≥75			
Mount Base	E27		E14	
Working Environment	-20°C~50°C (RH≤90%)			
LED Lifespan	≥50,000 hrs			

Certificate



SPOTLIGHT



Main Features

- Energy saving up to 80% in electricity consumption compared with traditional halogen spotlight.
- Environment friendly, no UV or infrared radiation, mercury free.
- Instant on without delay, high brightness and flicker-free.
- Highly reliable Constant Current Drive ensures a long lifespan of the LED
- Optional mount bases of MR16, E27 and GU10.
- Easy installation, ideal for direct replacement of traditional halogen spotlight
- Maintenance free, extra long lifespan of over 50,000 hours
- Suitable for applications in hotel, supermarket, museum, commercial shops, etc.

6.1 Spotlight



Model No.	TA-SL-04M	TA-SL-04E	TA-SL-04G
Dimension	Φ50×H45mm	Φ50×H62mm	Φ50×H60mm
Power	4W	4W	4W
Input Voltage	12VAC/DC	220VAC	50/60Hz
Light Source	3pcs High Power LED	3pcs High Power LED	3pcs High Power LED
Color Temperature	WW:2700-3700K PW:4000-5300K CW:5500-6700K		
Luminous Flux	210-280 lm	210-280 lm	210-280 lm
CRI (Ra)	≥80		
Working Environment	-20°C~50°C (RH≤90%)		
LED Lifespan	≥50,000 hrs		

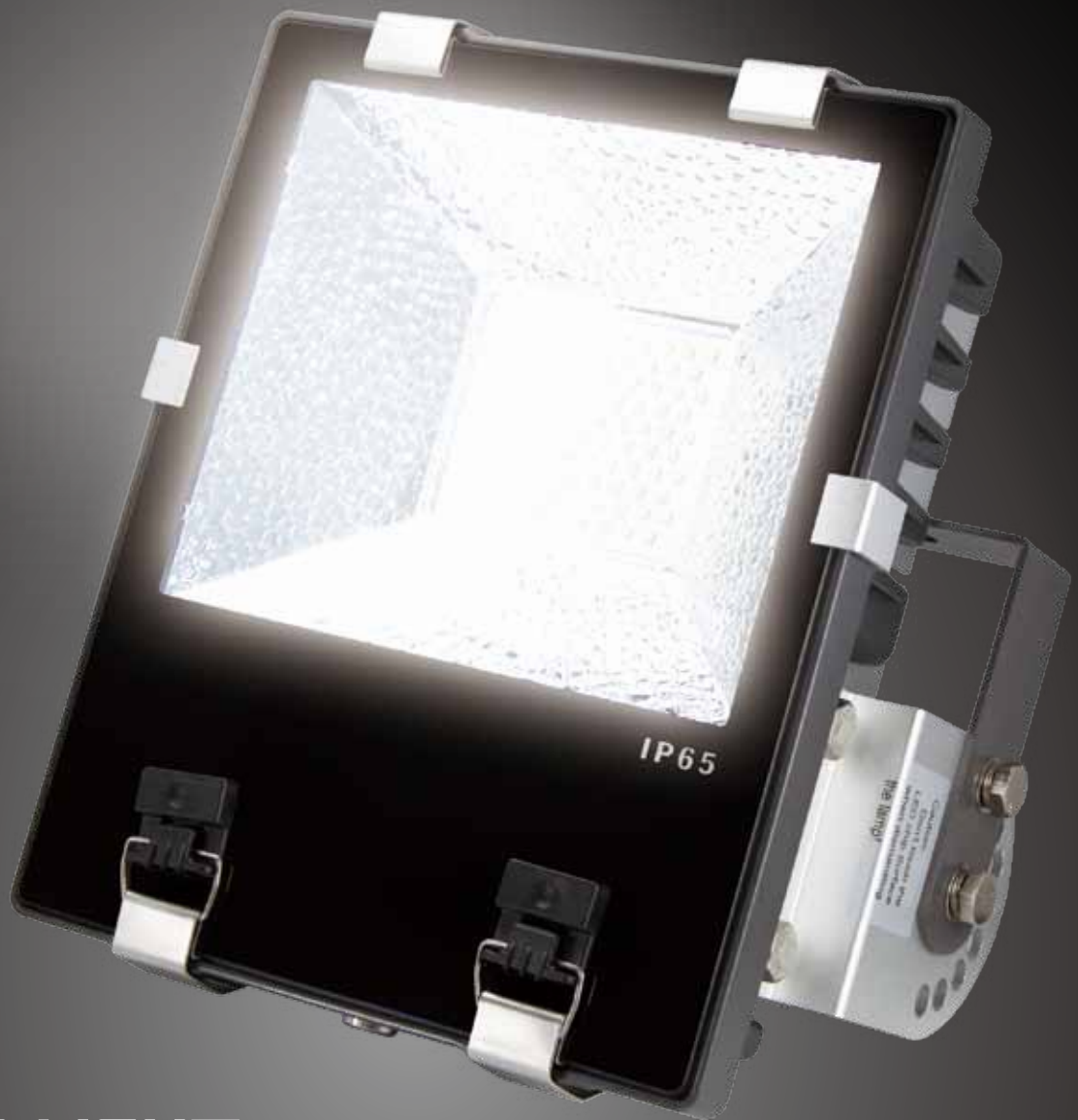
Certificate



Model No.	TA-SL-06M	TA-SL-06E	TA-SL-06G
Dimension	Φ50×H50mm	Φ50×H72mm	520×H69mm
Power	6W	6W	6W
Input Voltage	12VAC/DC	220VAC	50/60Hz
Light Source	4pcs High Power LED	4pcs High Power LED	4pcs High Power LED
Color Temperature	WW:2700-3700K PW:4000-5300K CW:5500-6700K		
Luminous Flux	280-365 lm	280-365 lm	280-365 lm
CRI (Ra)	≥80		
Working Environment	-20°C~50°C (RH≤90%)		
LED Lifespan	≥50,000 hrs		

Certificate





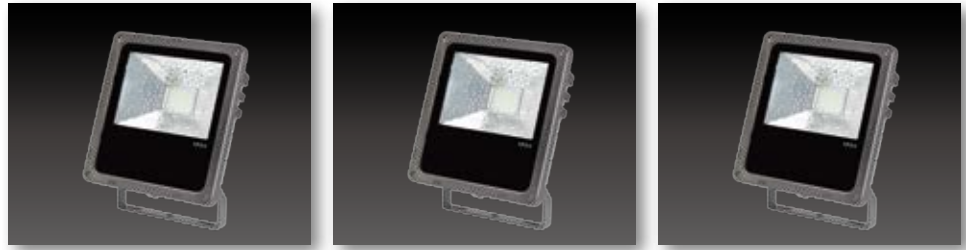
FLOOD LIGHT

Main Features

- Energy saving up to 50% in electricity consumption compared with traditional flood light.
- Environment friendly, no UV or infrared radiation, mercury free.
- Instant on without delay, high brightness and flicker-free.
- Highly reliable internal and UL listed external drivers ensures high power efficiency.
- Unique copper cooling fins structure for better heat dissipation.
- Easy installation, ideal for direct replacement of traditional flood light.
- Projection direction adjustable.
- Maintenance free, extra long lifespan of over 50,000 hours.
- Suitable for outdoor application, commercial buildings, advertisement boards, etc

Flood Light

7.1 Flood Light with Internal Driver



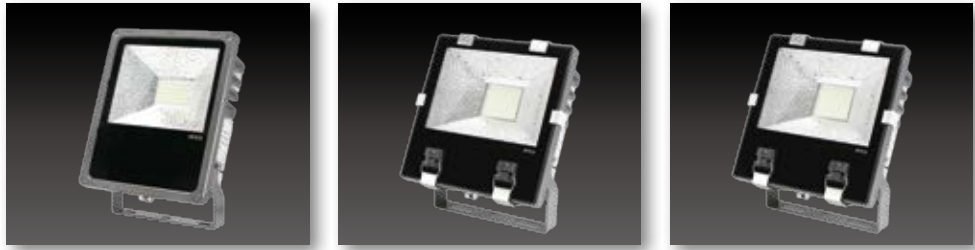
Model No.	TA-FL-010	TA-FL-020	TA-FL-030
Dimension	179x133x57mm	201x166x77mm	215x178x81mm
Power	10W	20W	30W
Input Voltage	220VAC 50/60Hz		
Light Source	SMD3535 (9pcs)	SMD3535 (20pcs)	SMD3535 (30pcs)
Color Temperature	WW:2700-3700K PW:4000-5300K CW:5500-6700K		
Luminous Flux	750-800 lm	1500-1600 lm	2250-2400 lm
CRI (Ra)	≥70		
IP Grade	65		
Working Environment	-20°C~50°C (RH≤90%)		
LED Lifespan	≥50,000 hrs		

Certificate



Flood Light

7.1 Flood Light with Internal Driver

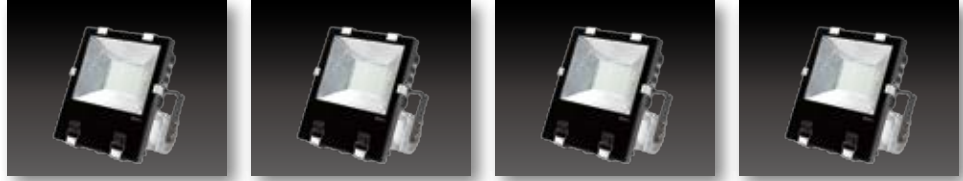


Model No.	TA-FL-050	TA-FL-070	TA-FL-080
Dimension	253x194x95mm	253x194x95mm	253x194x95mm
Power	50W	70W	80W
Input Voltage	220VAC 50/60Hz		
Light Source	SMD3535 (50pcs)	SMD3535 (70pcs)	SMD3535 (80pcs)
Color Temperature	WW:2700-3700K PW:4000-5300K CW:5500-6700K		
Luminous Flux	3750-4690lm	5200-5600 lm	6000-6400 lm
CRI (Ra)	≥70		
IP Grade	65		
Working Environment	-20°C~50°C (RH≤90%)		
LED Lifespan	≥50,000 hrs		

Certificate



7.2 Flood Light with External Driver



Model No.	TA-FL-100	TA-FL-120	TA-FL-150	TA-FL-200
Dimension	309x250x192mm	315x310x187mm	375x310x187mm	400x340x187mm
Power	100W	120W	150W	200W
Input Voltage	220VAC 50/60Hz			
Light Source	SMD3528 (144pcs)	SMD3528 (210pcs)	SMD3528 (288pcs)	SMD3528 (360pcs)
Color Temperature	WW:2700-3700K PW:4000-5300K CW:5500-6700K			
Luminous Flux	8000-8800 lm	10000-11800 lm	12000-13500 lm	15000-16500 lm
CRI (Ra)	≥70			
Working Environment	-20°C~50°C (RH≤90%)			
LED Lifespan	≥50,000 hrs			

Certificate



Intelligent Fire Alarm System



Products

- Intelligent Fire Alarm Control Panel (Wall Mounted Type)
- Intelligent Fire Alarm Control Panel (Rack Type)
- Intelligent Optical Smoke Detector
- Intelligent Heat Detector
- Common Detector Base
- Addressable Input Module
- Addressable Output Module
- Addressable I/O Module
- Addressable Zone Monitoring Module
- Loop Isolator
- Fire Repeater Panel
- Addressable Manual Call Point
- Addressable Sounder Strobe
- Handheld Programmer
- Power Supply Unit

8.1 Control Panel



JB-QBL-TX3000

Intelligent Fire Alarm Control Panel (Wall Mounted Type)

Features

- All functions are on-site programmable directly from the panel.
- Operation, maintenance and programming are fully menu driven.
- Simple and effective user interface with large LCD screen.
- Flash memory retains all programming and events data when the panel's power down.
- On-board printer for printing event log.
- Automatic monitoring and warning for contamination level of smoke detector to minimize the false alarm.

Technical Specifications

- Mains Supply: 220 VAC
- Standby Supply: 24 VDC
- Signal Bus: T&A Bus protocol.
- Capacity: 1~2 loops; 242 addresses per loop.
- Operating Temperature: -10°C~55°C
- Operating Humidity: RH≤95%
- Dimension in mm: 330 x130 x 400

Intelligent Fire Alarm Control Panel (Rack Type)

Features

- All functions are on-site programmable directly from the panel.
- Operation, maintenance and programming are fully menu driven.
- Simple and effective user interface with large LCD screen.
- Flash memory retains all programming and events data when the panel's power down.
- On-board printer for printing event log.
- Automatic monitoring and warning for contamination level of smoke detector to minimize the false alarm.
- Networkable with all T&A fire control panels
- 24-way bus linkage Fireman's Control Panel
- 6-way conventional FCP panel



JB-Q100GZ2L

Technical Specifications

- Mains Supply: 220 VAC
- Standby Supply: 24VDC
- Signal Bus: T&A Bus protocol.
- Capacity: 1~48 loops; 242 addresses per loop.
- Operating Temperature: -10°C~55°C
- Operating Humidity: RH≤95%
- Dimension in mm: 550 x 450 x 1800

8.2 Detector & Module



JTY-GM-LA 1550A

Intelligent Optical Smoke Detector

Features

- Non-polarized two-wire bus
- Intelligent self-diagnosis
- Built-in microprocessor
- Intelligently sense the chronic fire within 24 hours
- Enhanced ability of detector's anti-disturbance by built-in wave filters
- Dust contamination warning and electronic address coding
- Super isolated PCB sealed with epoxy resin

Technical Specifications

- Operating Voltage: 15~28 VDC
- Operating Current:
Standby: $\leq 0.5\text{mA}$
Alarm: $\leq 3.0\text{mA}$
- Indicator:
Monitoring: Red, flashes periodically
Alarm: Red, stays on
- Operating Temperature: $-10^{\circ}\text{C}\sim 55^{\circ}\text{C}$
- Operating Humidity: $\text{RH}\leq 95\%$
- Dimension in mm: 100 dia. x 46



JTW-ZDM-LA 1400A

Intelligent Heat Detector

Features

- Non-polarized two-wire bus
- Intelligent self-diagnosis
- Built-in microprocessor
- Electronic address coding
- Super isolated PCB sealed with epoxy resin

Technical Specifications

- Operating Voltage: 15~28 VDC
- Operating Current:
Standby: $\leq 0.5\text{mA}$
Alarm: $\leq 3.0\text{mA}$
- Indicator:
Monitoring: Red, flashes periodically
Alarm: Red, stays on
- Operating Temperature: $-10^{\circ}\text{C}\sim 55^{\circ}\text{C}$
- Operating Humidity: $\text{RH}\leq 95\%$
- Dimension in mm: 100 dia. x 46



TX-B1700

Common Detector Base

- Non-electric component
- Common base for T&A TX3 series intelligent detectors
- Base for termination and fixing of detectors

8.2 Detector & Module

Addressable Input Module



TX-I-3401P

Features

- Non-polarized two-wire bus
- Intelligent self-diagnosis
- Built-in microprocessor
- Plug-in structure allows easy installation and service
- Electronic address coding
- Super isolated PCB sealed with epoxy resin

Technical Specifications

- Operating Voltage: 15~28 VDC
- Operating Current:
Standby: $\leq 0.55\text{mA}$
Alarm: $\leq 5.5\text{mA}$
- Indicator:
Monitoring: Green, flashes periodically
Alarm: Red, stays on
- Operating Temperature: $-10^{\circ}\text{C} \sim 55^{\circ}\text{C}$
- Operating Humidity: $\text{RH} \leq 95\%$
- Dimension in mm: 87 x 87 x 37

Addressable Output Module



TX-I-3402P

Features

- Non-polarized two-wire bus
- Intelligent self-diagnosis
- Built-in microprocessor
- Plug-in structure allows easy installation and service
- Electronic address coding
- Super isolated PCB sealed with epoxy resin

Technical Specifications

- Operating Voltage: 15~28 VDC
- Operating Current:
Loop Supply Standby: $\leq 0.6\text{mA}$
Loop Supply Alarm: $\leq 2.0\text{mA}$
External Supply Standby: $\leq 5.0\text{mA}$
External Supply Alarm: $\leq 20.0\text{mA}$
- Indicator:
Monitoring: Green, flashes periodically
Alarm: Red, stays on
- Operating Temperature: $-10^{\circ}\text{C} \sim 55^{\circ}\text{C}$
- Operating Humidity: $\text{RH} \leq 95\%$
- Dimension in mm: 87 x 87 x 37

Addressable I/O Module



TX-I-3403P

Features

- Non-polarized two-wire bus
- Intelligent self-diagnosis
- Built-in microprocessor
- Plug-in structure allows easy installation and service
- Electronic address coding
- Super isolated PCB sealed with epoxy resin

Technical Specifications

- Operating Voltage: 15~28 VDC
- Operating Current:
Loop Supply Standby: $\leq 0.65\text{mA}$
Loop Supply Alarm: $\leq 2.0\text{mA}$
External Supply Standby: $\leq 5.0\text{mA}$
External Supply Alarm: $\leq 20.0\text{mA}$
- Indicator:
Monitoring: Green, flashes periodically
Alarm: Red, stays on
- Operating Temperature: $-10^{\circ}\text{C} \sim 55^{\circ}\text{C}$
- Operating Humidity: $\text{RH} \leq 95\%$
- Dimension in mm: 87 x 87 x 37

8.2 Detector & Module

Addressable Zone Monitoring Module



TX-I-3404P

Features

- Non-polarized two-wire bus
- Intelligent self-diagnosis
- Built-in microprocessor
- Monitor up-to 16 detectors (standby current < 100uA per detector)
- Plug-in structure allows easy installation and service
- Electronic address coding
- Super isolated PCB sealed with epoxy resin

Technical Specifications

- Operating Voltage: 15~28 VDC
- Operating Current:
Standby: $\leq 0.8\text{mA}$
Alarm: $\leq 2.6\text{mA}$
- Indicator:
Monitor: Green
Alarm: Red
Fault: Yellow
- Operating Temperature: $-10^{\circ}\text{C}\sim 55^{\circ}\text{C}$
- Operating Humidity: $\text{RH}\leq 95\%$
- Dimension in mm: 87 x 87 x 37

Loop Isolator



TX-C-3407

Features

- Non-polarized input/output signal.
- Isolated devices can be re-connected to system automatically after fault's cleared
- Super isolated PCB sealed with epoxy resin

Technical Specifications

- Operating Voltage: 15~28 VDC
- Operating Current:
 $\leq 100\text{mA}$, K opened
 $\leq 200\text{mA}$, K shorted
- Indicator:
Monitor: off
Action: Red, stays on
- Operating Temperature: $-10^{\circ}\text{C}\sim 55^{\circ}\text{C}$
- Operating Humidity: $\text{RH}\leq 95\%$
- Dimension in mm: 56 x 56 x 21

Fire Repeater Panel



TX-3402E

Features

- Back lit LCD displaying all fire information
- Display Capacity: Max. 512 pieces of fire information
- Simultaneous audible and visual alarm with the control panel
- MUTE, UP, DOWN, BROWSE keys are available
- Two wiring ways: RS-485 bus and loop

Technical Specifications

- Operating Voltage: 15~28 VDC
- Operating Current:
Standby: $\leq 20\text{mA}$
Alarm: $\leq 80\text{mA}$
- Operating Temperature: $-10^{\circ}\text{C}\sim 55^{\circ}\text{C}$
- Operating Humidity: $\text{RH}\leq 95\%$
- Dimension in mm: 179 x 109 x 44.5

8.3 Audible & Visual Alarms



J-SJP-M-LA1705

Addressable Manual Call Point

Features

- Non-polarized two-wire bus
- Built-in microprocessor
- Voltage free contact for local interface
- Resetttable (non-breaking) via special key
- Electronic address coding and re-addressable on site
- Super isolated PCB sealed with epoxy resin

Technical Specifications

- Operating Voltage: 15~28 VDC
- Operating Current:
Standby: $\leq 0.5\text{mA}$
Alarm: $\leq 2.3\text{mA}$
- Output Contact: 100mA @30 VDC
- Operating Temperature: $-10^{\circ}\text{C}\sim 55^{\circ}\text{C}$
- Operating Humidity: $\text{RH}\leq 95\%$
- Dimension in mm: 90 x 90 x 33



TX-I-3301

Addressable Sounder Strobe

Features

- Non-polarized 24 VDC
- High intensity LED cluster strobe
- Low power consumption
- Electronic address coding
- Integrated structure design ensures high reliability and easy installation
- Super isolated PCB sealed with epoxy resin

Technical Specifications

- Operating Voltage: 15~28 VDC
- Operating Current:
Loop Standby: $\leq 0.6\text{A}$
Loop Alarm: $\leq 5.0\text{A}$
Power Supply: $\leq 2.0\text{mA}$
Power Supply Alarm: $\leq 50.0\text{mA}$
- Flashing Frequency: $2 \times (1 \pm 20\%) \text{ Hz}$
- Sound Pulsing Frequency: $4 \times (1 \pm 20\%)$
- Operating Temperature: $-10^{\circ}\text{C}\sim 55^{\circ}\text{C}$
- Operating Humidity: $\text{RH}\leq 95\%$
- Dimension in mm: 145 x 115 x 60



TX-3932E

Handheld Programmer

Features

- Program all types of T&A bus devices
- Wireless infrared remote programming
- Mobile phone simulated design
- Color LCD display
- User friendly, menu-driven program
- Battery powered and auto power off

Technical Specifications

- Power supply: 2 x AA size battery
- Operation Current: $\leq 11\text{mA}$
- Standby Current: $\leq 20\mu\text{A}$
- Operating Temperature: $-10^{\circ}\text{C}\sim 55^{\circ}\text{C}$
- Operating Humidity: $\text{RH}\leq 95\%$
- Dimension in mm: 54 x 28 x 130

8.4 Power Supply Unit



TD24-5A

Power Supply Unit

Features

- Digital dynamic display of output voltage and current
- LED indicators for the status of Mains On, Mains Fault, Battery Fault and Line Fault
- Automatic protection for over load, over charge and discharge
- Networkable with T&A fire control panels
- Auto-switch between Main Power and Battery when Mains Power is off and on
- Buzzer alarms for Fault on Mains Power, Battery and Line

Technical Specifications

- Mains Supply: 220 VAC
- Output Voltage: 27.4 @21°C
- Output Current: 5A @24 VDC
- Operating Temperature: -10°C~55°C
- Operating Humidity: RH≤95%
- Dimension in mm: 400 x 320 x 120



TD24-10A

Power Supply Unit

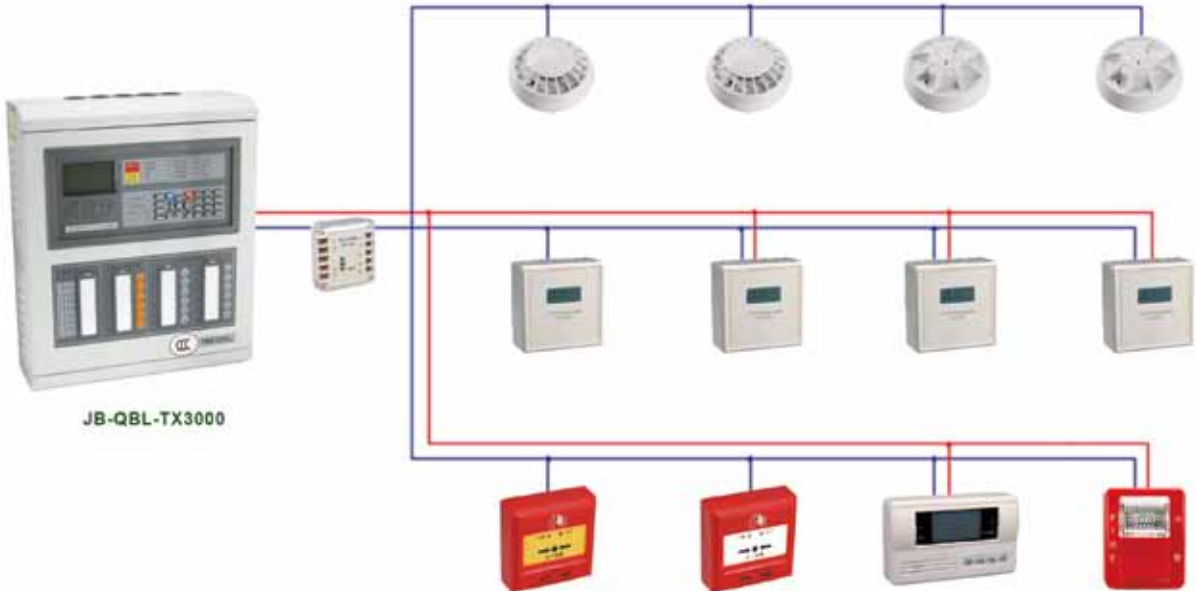
Features

- Digital dynamic display of output voltage and current
- LED indicators for the status of Mains On, Mains Fault, Battery Fault and Line Fault
- Automatic protection for over load, over charge and discharge
- Networkable with T&A fire control panels
- Auto-switch between Main Power and Battery when Mains Power is off and on
- Buzzer alarms for Fault on Mains Power, Battery and Line

Technical Specifications

- Mains Supply: 220 VAC
- Output Voltage: 27.4 @21°C
- Output Current: 10A @24 VDC
- Operating Temperature: -10°C~55°C
- Operating Humidity: RH≤95%
- Dimension in mm: 450 x 380 x 135

Intelligent Fire Alarm Control System





泰和安科技(香港)有限公司

Tanda Technology (Hong Kong) Limited

G/F, 13 Pitt Street, Yau Ma Tei, Kowloon, Hong Kong

Tel : (852) 2390 0562

Fax : (852) 2390 0962

E-mail : info@tanda.hk

Web : www.tanda.hk

Factory in China:

Xinjianxing Industrial Park, Fengxin Road, New Guangming District
Baoan, Shenzhen, Guangdong, China